



# **ABU DHABI INDIAN SCHOOL, BRANCH 1 - AL WATHBA**

## **KINDERGARTEN CURRICULUM OVERVIEW 2026-2027**



Our curriculum is designed to support every child as a unique learner. It is inclusive and holistic, aiming to challenge and inspire students while helping them build confidence and reach their full potential. Through engaging and stimulating learning experiences, children develop a wide range of skills and abilities.

Aligned with ADEK guidelines and NCERT Early Learning Goals, the modified kindergarten curriculum in ADIS-Al Wathba-Br1 follows a spiral learning approach. Key concepts are introduced early and revisited progressively, with increasing depth and complexity. This approach enables children to build on prior knowledge, strengthen their understanding, and develop essential skills through continuous reinforcement and meaningful learning experiences.

Our curriculum also encourages creativity, collaboration, and critical thinking, ensuring that students grow into confident, independent, and responsible learners.

Our kindergarten curriculum follows a developmentally appropriate and child-centered approach that supports holistic learning and ensures a smooth transition to the CBSE curriculum after KG2. It aligns with clearly defined learning goals, effective pedagogical practices, and early learning outcomes.

The curriculum integrates the Sustainable Development Goals (SDGs), inclusion, UAE culture, citizenship values, and common teaching and learning goals that promote the overall development of children. **In line with the UAE Ministry of Education guidelines, we offer Arabic and Islamic Studies to help young learners develop a love for the Arabic language, nurture Islamic values, and celebrate the UAE's cultural heritage, while fostering a strong sense of national identity.**

Our learning environment encourages exploration, creativity, collaboration, and independence through flexible learning spaces, engaging learning centres, technology integration, field trips, assemblies, and a variety of activities that support the diverse learning needs of all students. **The school also has a dedicated Heritage Room where students can explore UAE traditions, culture, and values, helping them develop a stronger understanding of national identity.**

We foster an inclusive classroom where all learning styles are supported, and differences are celebrated. Gifted students engage in enrichment, creative projects, and peer teaching, while SOD/ALN students benefit from sensory activities, visual instructions, and storytelling, assuring every learner thrives in a safe, positive, and stimulating environment. These strategies help build a more equitable and inclusive classroom where all students can fully participate, feel valued, and reach their full potential.





## Objectives of Early Years Education (EYE)

1. Enhance the all-around development of a child's personality and inclusion of healthy attitudes, life skills, and good values.
2. Lay the foundation for a healthy, productive, and satisfying life in the future by enabling the child to develop his or her maximum potential through:
  - Physical well-being, health, and motor development
  - Personal social and emotional development
  - Creative and aesthetic development
  - Language, communication, and literacy skills
  - Environmental awareness, development of scientific knowledge, and development of mathematical thinking and reasoning
3. Prepare the child for smooth transitions and success in later schooling.

## The Three Characteristics of Effective Learning of the Early Years Foundation Stage



## Goals Of Early Years of Education (EYE)

The present curriculum is built upon three goals that cater to all the domains of development.

### **Goal 1- Children maintain good health and well-being-**

This goal highlights the different aspects of the social, emotional, and physical motor development of the children. These aspects include the development of self-concept, self-control, social skills, coordination, and refinement of gross motor and fine motor skills.



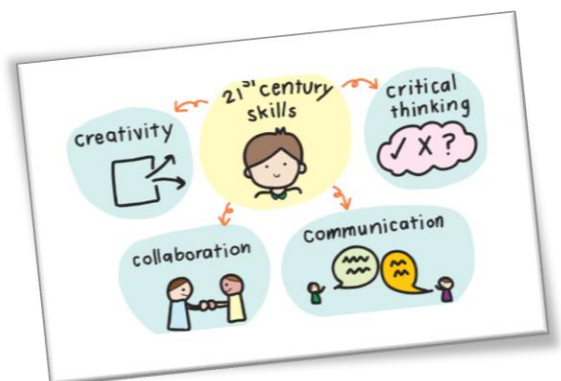
### **Goal 2- Children become effective communicators.**

**This goal focuses on developing children’s language and literacy skills, so they become effective communicators. To support this, children are provided with many opportunities to practice listening, speaking, reading, and writing.**

**Goal 3- Children are engaged and feel a connection to their surroundings.** This objective emphasizes how children interact with their surroundings to develop a variety of concepts and skills.

As a result, children are provided with opportunities to demonstrate qualities that support the achievement of this goal, such as curiosity, exploration, expressiveness, persistence, discipline, creativity, and strong observation skills. In addition, a variety of situations and experiences are encouraged to help develop problem-solving and critical-thinking abilities.

Areas of Learning			
Prime Areas			
Personal, Social and Emotional Development	Physical Development	Communication and Language	
<ul style="list-style-type: none"> <li>• Self-Regulation</li> <li>• Managing Self</li> <li>• Building Relationships</li> </ul>	<ul style="list-style-type: none"> <li>• Gross Motor Skills</li> <li>• Fine Motor Skills</li> </ul>	<ul style="list-style-type: none"> <li>• Listening, Attention and Understanding</li> <li>• Speaking</li> </ul>	
Specific Areas			
Literacy	Mathematics	Understanding the World	Expressive Arts and Design
<ul style="list-style-type: none"> <li>• Comprehension</li> <li>• Word Reading</li> <li>• Writing</li> </ul>	<ul style="list-style-type: none"> <li>• Number</li> <li>• Numerical Patterns</li> </ul>	<ul style="list-style-type: none"> <li>• Past and Present</li> <li>• People, Culture and Communities</li> <li>• The Natural World</li> </ul>	<ul style="list-style-type: none"> <li>• Creating with Materials</li> <li>• Being Imaginative and Expressive</li> </ul>



- I. **The EYE program is holistic by nature.** The content of the EYE program includes activities for:
  - Physical well-being, health, and motor development
  - Personal social and emotional development
  - Creative and aesthetic development
  - Language, communication, and literacy skills
  - Environmental awareness, development of scientific knowledge, and development of mathematical thinking and reasoning
- II. **The EYE program is child-centered, developmentally appropriate, and process-oriented.** Play-based

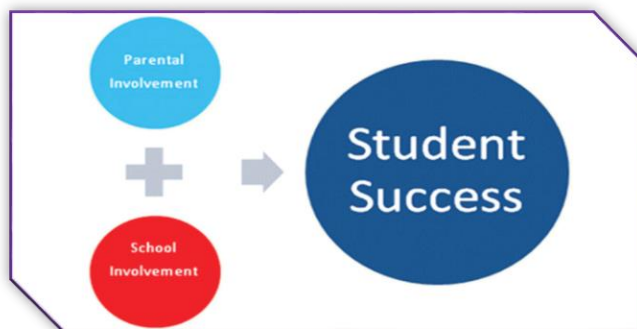
early learning activities are planned to expose children to a variety of experiences.



### III. Assessment of children is continuous and comprehensive.

The nature of assessment is the continuous evaluation of specific aspects of learning. The assessment is broadly classified into 3 terms. There will be 3 formal and 3 informal assessments in an academic year. With a clear aim in mind, we created assessments using a variety of tools, approaches, and rubrics. To address learning gaps and enhance teaching methods, we offer constructive feedback.

IV. **Parent and community involvement** - It involves parent-teacher meetings and parental involvement activities, which are a vital part of the EYE program. This connection is a key component of a child's development and supports further learning.



### V. EYE facilitators facilitate:

- To develop knowledge and skills in all areas of early learning and development to help children learn how to learn.
- To understand individual differences and learning styles
- To respect individual pattern space and timings of learning

### VI. Some strategies for classroom interactions

Proceed from concrete to abstract experiences.

- Have a balance of child-led and teacher-initiated interaction.
- Encourage cooperative learning.
- Use the thematic method to initiate integrated learning.
- Work for the active involvement of all children.



### VII. For building teacher-child relationships

- Allow children to express themselves through conversation and encourage them to voice their thoughts.
- Accept, respect, and comfort children.
- Be responsive, offer warmth, and reach out to all children.

Every child is unique and has unique potential. The curriculum supports multiple intelligence and integrated learning.

Students are given context for the concepts and subjects being taught from an early age, which makes learning relevant. Once the children become young adults, we link their education to various career paths so that they can choose their own future goals.

## WE CREATE LOVE FOR LEARNING

